



Last Revised: 31/08/2009

## GALILEO SOUTHERN AFRICA – INSTALLING GALILEO DESKTOP 2.2 FOR TRAVEL AGENCY CONNECTIVITY (MANUAL INSTALLATION)

### Quick reference guide for Galileo Desktop 2.2 installation

<p><b>Galileo Desktop2 Installation</b></p> <p>Start installation <b>Galileo Desktop</b> appears, Click "Next"</p>	<p>The old version is backed up, Viewpoint is removed, Note;in some cases the Pkeys scripts may not be compatible and may have to be modified.</p>	<p>The XML6 Parser is installed, click "OK" to proceed with the installation, this step may be skipped on some installations if installed already.</p>	<p>Click "Next" to proceed, Accept the license agreement, Click "Next" Enter the Name and Company Information as "Galileo Southern Africa" Click "Next" Click "Install" Click "Finish" to complete the installation</p>
<p>Galileo Desktop Installation begins Click "Next" Agree to the license terms, click "Yes" <b>Confirm all applicable pre-installation tasks are completed,</b> Click "Next" Select "Terminal windows visible at startup" Click "Next" Check "Do not Start Galileo Desktop automatically" Click "Next"</p>	<p>Select multiple Languages (If desired), and a default language (English), Click "Next" Click "Next"</p>	<p>Type in ClientID = Gxxxxxxx "Apollo/Galileo" = Keyboard <b>For Agency Configuration:</b> <b>(Fixed Configuration Server Addresses)</b> Primary IPCS Address = 57.8.81.13 Secondary IPCS Address = 57.8.81.113 Click "OK", Click "OK"</p>	
<p>Select Features PointAndClick = "Yes" Relay = "Yes" Scriptwriter = "Yes" Click "Next"</p>	<p>Select Features Select "Galileo Relay" Click "Next" Select Features Select <b>All</b> Features Click "Next" Software installs....</p>	<p>Setup Type <b>MS Access Database = Selected</b> Click "Next" Click "Finish"</p>	<p><b>Desktop Customization</b></p> <p>Use the Desktop 2.2 installer to complete the Desktop customization. Select the "Toolbar" option</p>



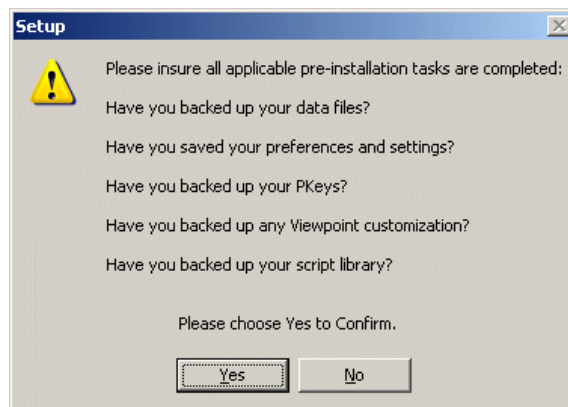
Last Revised: 31/08/2009

---

## A Fully detailed installation guide for Galileo Desktop 2.2 installation below:

### *Pre-installation requirements*

At the beginning of the installation, you will encounter the Setup dialog. You must click Yes before you can proceed with the installation. The following tables will help you find the files you want to backup. When the installation is complete, you are reminded to reinstate these files.



**Note:** If you are not familiar with how to back up files, please check with your manager/IT manager.

File locations for each question are listed the last page of this document.



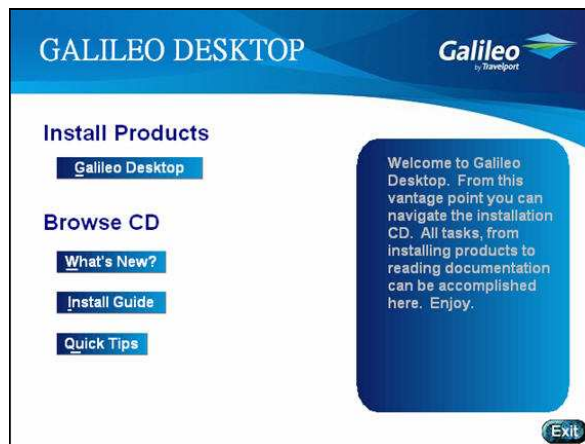
Last Revised: 31/08/2009

## ***Install the Galileo Desktop<sup>SM</sup>***

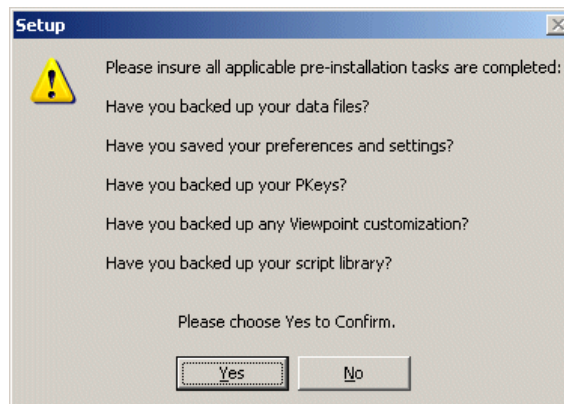
When your workstation meets installation requirements, the following screen appears. This installation will load both Viewpoint™ 5.0, and Focalpoint® 5.0.

Follow these steps to install Galileo Desktop<sup>SM</sup>.

Click Galileo Desktop<sup>SM</sup> under the heading Install Products.



The Setup screen appears.



Confirm that all of the applicable items are backed up, then click **Yes** to uninstall your current version of Galileo Desktop.

InstallShield prepares the install. A progress box may appear.

Last Revised: 31/08/2009

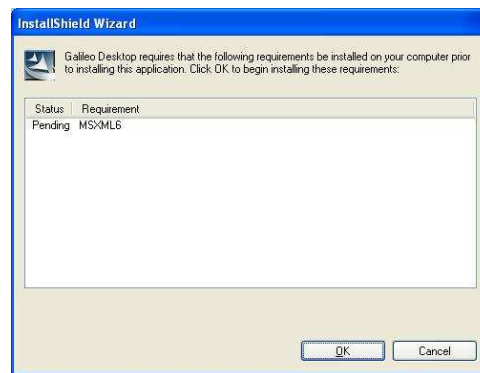
---

## MSXML 6.0 Update (Required if not loaded)

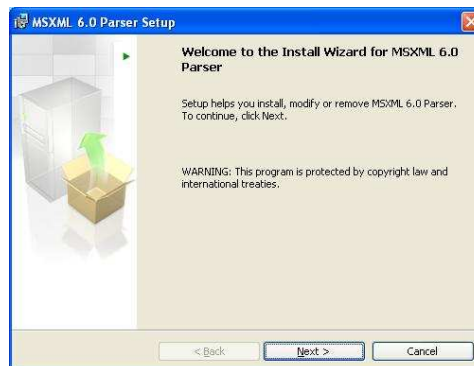
Galileo Desktop<sup>SM</sup> now requires MSXML 6.0.

The install will check to ensure it is installed. If it is not present on your workstation, the Galileo Desktop<sup>SM</sup> installation will begin to install MSXML 6.0 first.

The following screens appear.

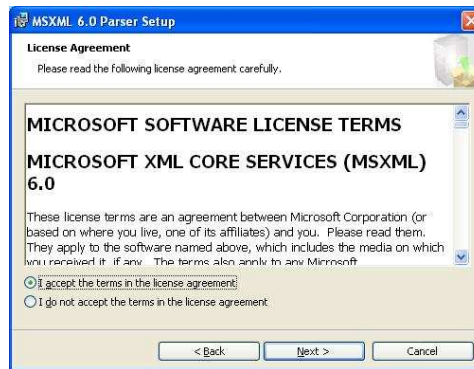


1. Click OK to begin the installation.

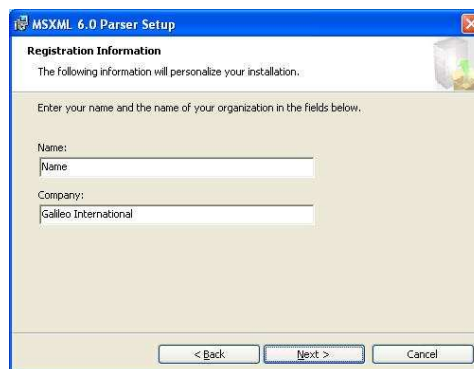


2. Click Next.
3. Click I accept the terms in the license agreement button.

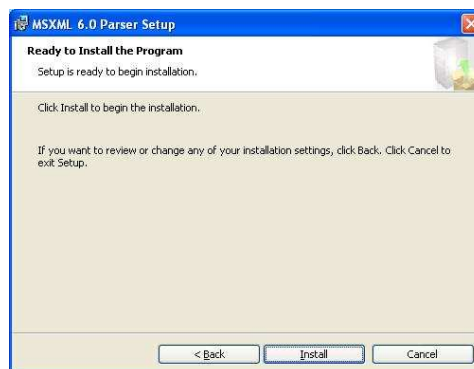
Last Revised: 31/08/2009



4. Click Next



5. Enter your Name and Company Name and click Next.

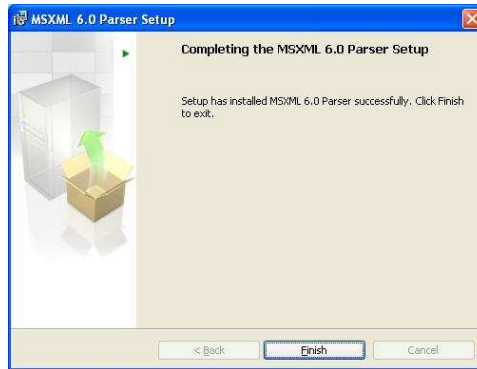


6. Click Install.



Last Revised: 31/08/2009

---

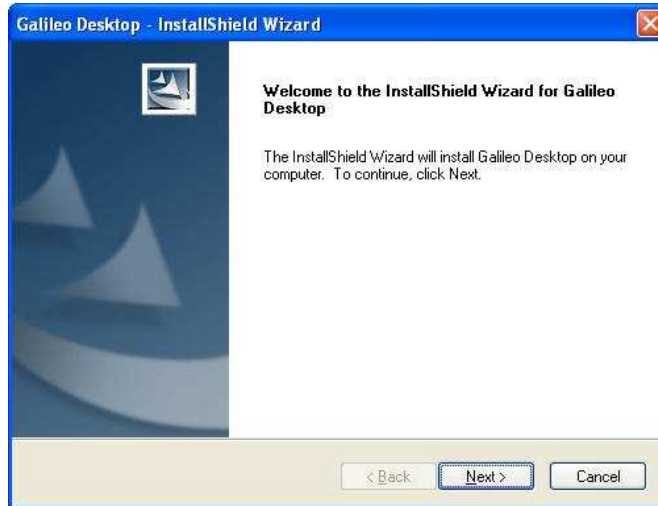


7. Click Finish.

The installation can now begin.

## The Install Begins

When the Galileo Desktop<sup>SM</sup> is ready to begin the installation, the Welcome screen appears. Instructions are on the screen.



8. Click Next to continue.

The License Agreement screen appears.

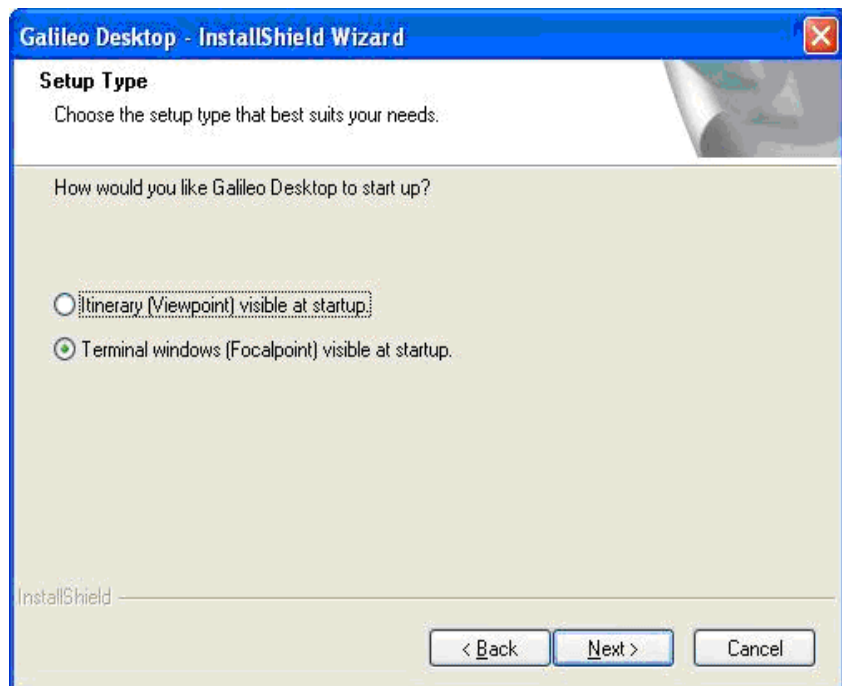


Last Revised: 31/08/2009



9. Click **Yes** to accept the agreement and proceed with the installation.

The Setup Type dialog appears.

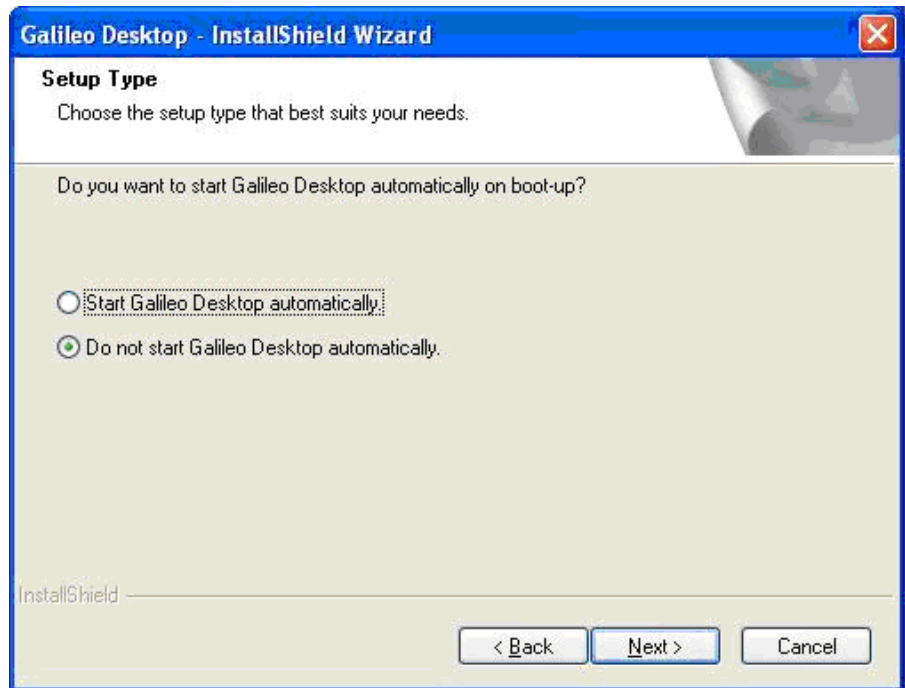


10. Make the selection **Terminal Windows (Focalpoint) visible at startup** and click **Next** to continue.

The Setup type dialog box for the Galileo Desktop<sup>SM</sup> appears.



Last Revised: 31/08/2009



11. Click **Do Not start Galileo Desktop automatically**, and click **Next** to continue.

12. The Language Selection screen appears.



13. Click a language name to select it. **Hold down the Ctrl key and click several languages, if desired.**

All selected languages appear in the Please select the default language for Galileo Desktop<sup>SM</sup>, drop-down





Last Revised: 31/08/2009

14. Click the drop-down arrow and your default language from the list.

Any language selected is available for use in Galileo Desktop<sup>SM</sup>.

15. Click **Next** to continue.

The Install Settings dialog box appears identifying the system default settings associated with the Galileo Desktop<sup>SM</sup> installation.



16. Click **Next** to continue.  
If you are installing Galileo Desktop<sup>SM</sup> *for the first time*:
- The Connection screen appears.





Last Revised: 31/08/2009

- b. Enter your **Client Identifier**, **Primary IPCS** and **Secondary IPCS Addresses**, and click **OK**.  
Your setting will look similar to the example below.

A screenshot of a Windows dialog box titled "Connection". It contains several input fields and radio buttons. The "Connection Name" field contains "MyConnection". The "Client Identifier" field contains "G1234567". Under "Keyboard Mode", the "Apollo / Galileo Mapped" radio button is selected. Below that, the "Use Fixed Configuration Server Addresses" radio button is selected. This section includes two IP address fields: "Primary IPCS Address" with "57 . 8 . 81 . 13" and "Secondary IPCS Address" with "57 . 8 . 81 . 113". There are also radio buttons for "Use Domain Name Services (DNS)", "Config Server Name", and "IP Concentrator Name" (all empty). A "Force Download" checkbox is checked. "OK" and "Cancel" buttons are at the bottom.

Click **OK**

The verify keyboard mode message appears.

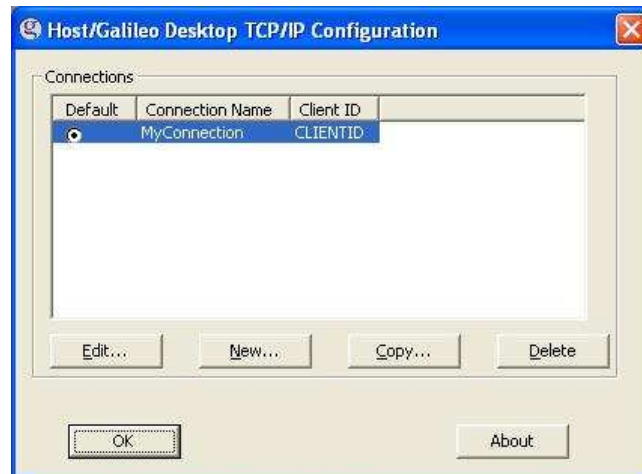


- c. Click **OK**.

The Host/Galileo Desktop TCP/IP Connection dialog appears displaying your connection.



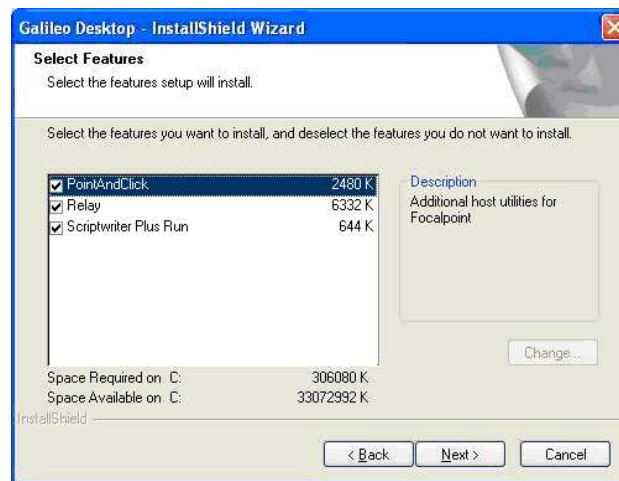
Last Revised: 31/08/2009



17. Click **OK** to accept the Host-Focalpoint TCP/IP Configuration.

The Select Features dialog box appears.

Point and Click, Relay™ and Scriptwriter Plus™ Run are selected by default for Galileo® users.

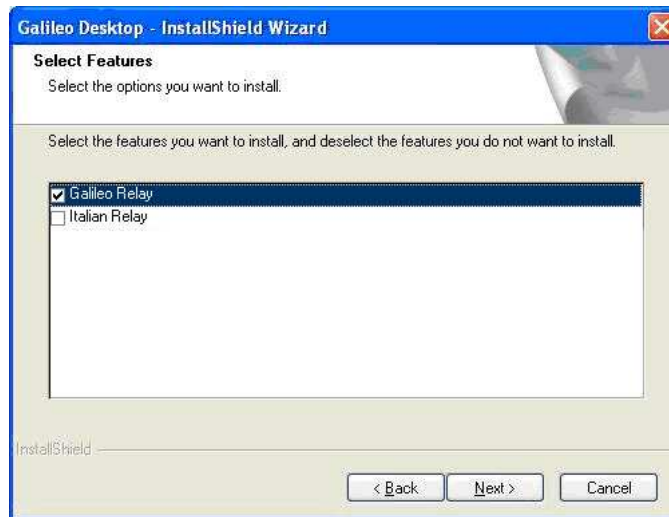


18. Clear the check box for the items you *do not* want to install. Click Next to continue.

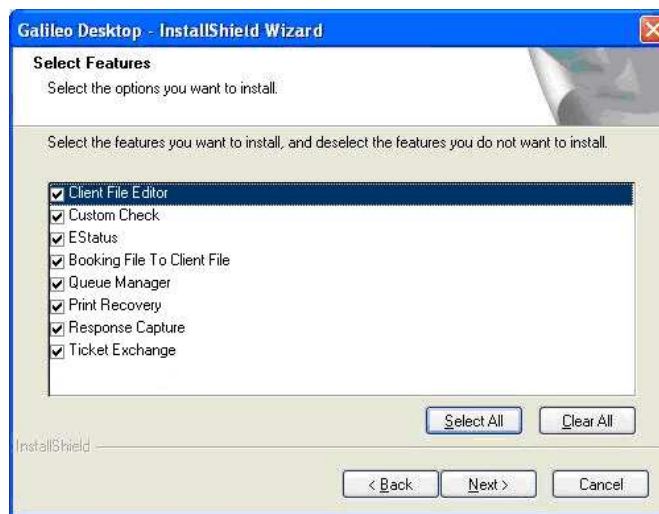
– The (Relay™) Select Features dialog box appears



Last Revised: 31/08/2009



19. Click to select the version of Relay™ applicable to your system and click Next to continue.



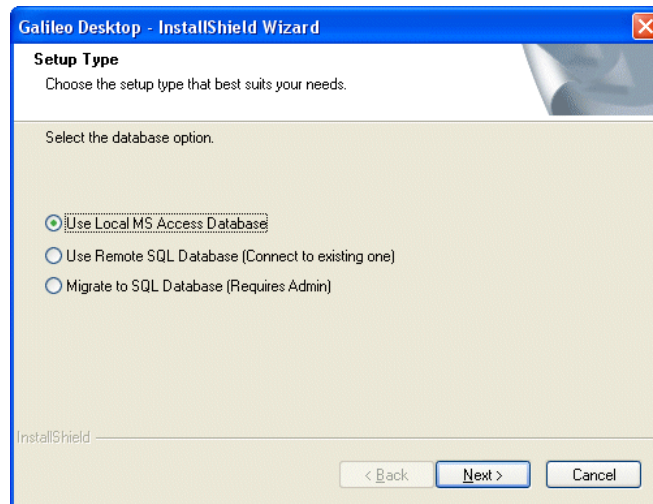
20. Click Next to accept the default (all selected), or clear the check box for any feature you do not want to install and click **Next**.

21. The installation begins processing your Setup selections. During the Setup process, the Setup Type dialog appears. Click to select the database option that applies to your agency.



Last Revised: 31/08/2009

---



If you select:

- **Use Local MS Access Database:** This is the default connection to travel information loaded on your local drive.

Click **Finish**.



Last Revised: 31/08/2009

#### Have you backed up your data files?

File Type	If you are installing over Focalpoint® 3.5	If you are installing over Galileo Desktop <sup>SM</sup>
Replay Files	\\FP\REPLAY\*.*	\\FP\REPLAY\*.*
Scriptwriter Plus Files	\\FP\DATADIR\SWPLUS\SCRIPTS\*.*	\\FP\DATADIR\SWPLUS\SCRIPTS\*.*
Browser Script Files	\\FP\DATADIR\SCRIPTS\*.*	\\FP\DATADIR\SCRIPTS\*.*

#### Have you saved your preferences and settings?

File Type	If you are installing over Focalpoint® 3.5	If you are installing over Galileo Desktop <sup>SM</sup>
Focalpoint Config File		\\FP\DATADIR\WSTN\focalpoint.config.xml \\FP\DATADIR\USER\users\focalpoint.config.xml
Scriptwriter Run Group	\\FP\DATADIR\WSTN\GRP*.SWR	

#### Have you backed up your Pkeys?

File Type	If you are installing over Focalpoint® 3.5	If you are installing over Galileo Desktop <sup>SM</sup>
Galileo® Keys	\\FP\DATADIR\PKEYS\*.CPR	
Galileo Desktop <sup>SM</sup>		\\FP\DATADIR\PKEYS\*.PKEYS.XML

#### Have you backed up any Viewpoint Customization?

File Type	If you are installing over Focalpoint® 3.5	If you are installing over Galileo Desktop <sup>SM</sup>
		I have modified non Version Controlled files, what steps do I need to take? (ie I have added a right click menu into the pnr.html file which launches one of my files). Take a copy of the code that has been added to the file and after the installation, this code can be added back into the appropriate file within Galileo Desktop <sup>SM</sup> . The Galileo Desktop file structure has changed so it is important to ensure that the correct file is being edited.

#### Have you backed up your script library?

File Type	If you are installing over Focalpoint® 3.5	If you are installing over Galileo Desktop <sup>SM</sup>
Galileo Java Script Library		\\FP\SWDIR\Custom\viewpointGalileo\Custom\viewpointGalileo
Java Script Library Val Files		\\FP\SWDIR\Custom\viewpointGalileo\Custom\viewpointGalileo\g dia_ValFiles